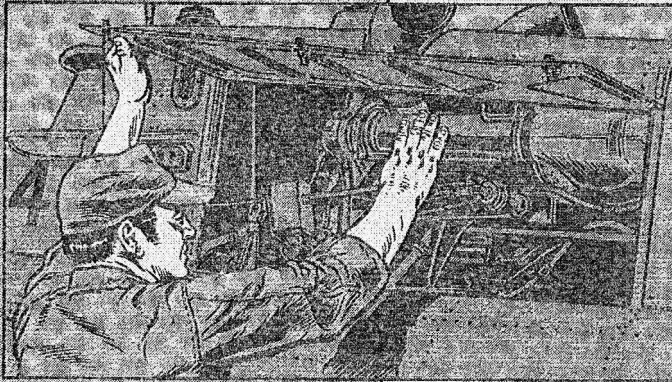


HOT END TOOL

Dear Editor,

I've been working for some time with the T63-A-700 engine and pulling the hot end, due to high operating temperature, is a problem.

The rear lip of the heat shield is directly under the area where the hot section separates. You only have about 1/4-in clearance between the shield and combustion chamber. The 5 nuts are easy to reach but putting a hexhead wrench in position to hold the



bolts is something else—impossible! Well, we made a special tool which saves time and elbow grease. Just cut off a salvaged screwdriver and weld a 5/32-in hex wrench to it, so it's not over 8 1/2 inches long. Bend the hex wrench as shown and the tool is complete.

SSG Louis Adams
Louisiana ARNG

(Ed Note—Good show! The head shed recommends use of the tool. You should also be able to use it in other areas where you have limited working space.)

