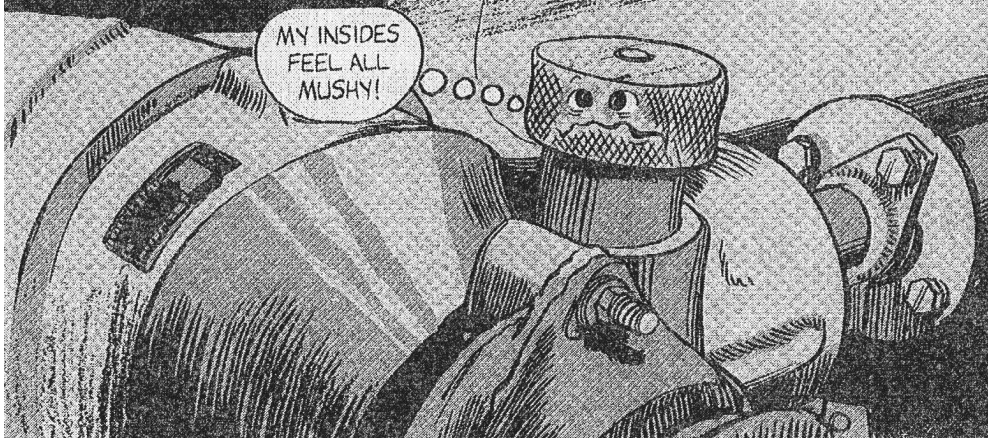


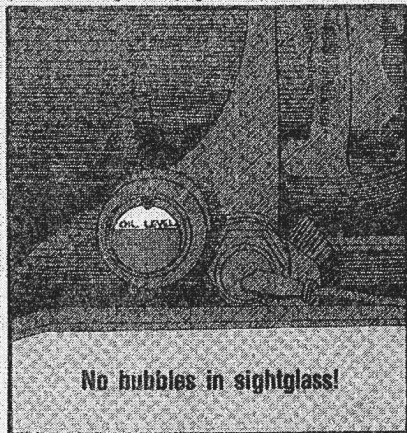
Gearbox Contamination?

MY INSIDES
FEEL ALL
MUSHY!



The oil in your bird's tail rotor gearbox is constantly being attacked, both from within and from without.

Moisture in the air contaminates oil. It gets through the filler cap or through seals. So always be on guard. Eyeball the sight glass during every pre-flight inspection.

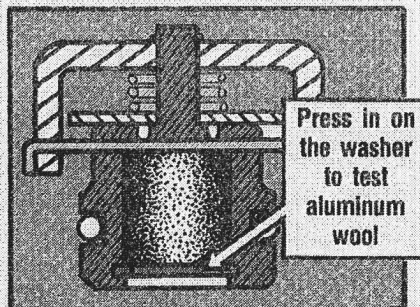


If you see any water bubbles; or if the oil has a dirty, milky appearance, drain and flush the gearbox. Refill the gearbox like it says in your bird's maintenance manual.

Another source of oil contamination is the aluminum wool that's part of the gearbox filler cap assembly.

If the AOAP lab says you have high aluminum wear in the gearbox, check out the filler cap.

Lay it on a workbench upside down.



Press in on the washer holding the wool in place, then release it. If the washer springs back against the retaining ring, the wool's OK. If it doesn't spring back, the wool is worn out.

Replace the wool with NSN 5350-00-286-4851. Use enough to put the washer under tension, then insert the retaining ring.