

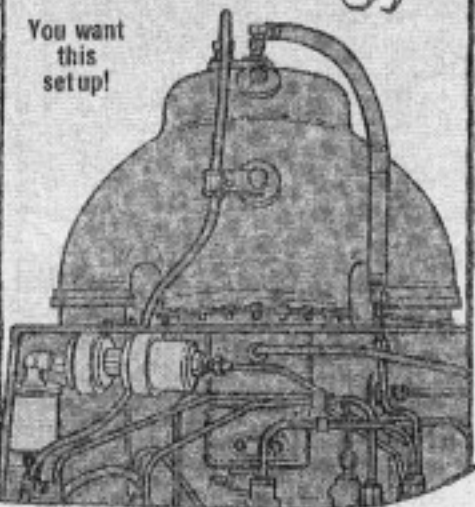
Check Double Check Valve!

ADD A DOUBLE CHECK VALVE?

GREAT!

HMMM--

You want this setup!



The new double check valve on your OH-58A engine may be hooked up one of two ways. You'll spot the latest plumbing arrangement on a T63-A-700 engine shipped from overhaul.

The reason for the change from the original setup is to provide enough clearance so the engine will fit into the shipping container.

So, if you're about to add the double check valve to your engine, skip the hookup shown in Fig 5-7.2, Ch 10 (Mar 77) to TM 55-2840-231-24. The manual's being updated.

Instead, make the hookup according to Fig 5-2 in TM 55-2840-241-23 (Nov 77) on the T63-A-720 engine.

THEN, YOU WON'T HAVE ANY SHIPPING CONTAINER PROBLEMS!

