

Swashplate Support Assembly Mount Hardware TM Changes

TM 1-1520-228-23P

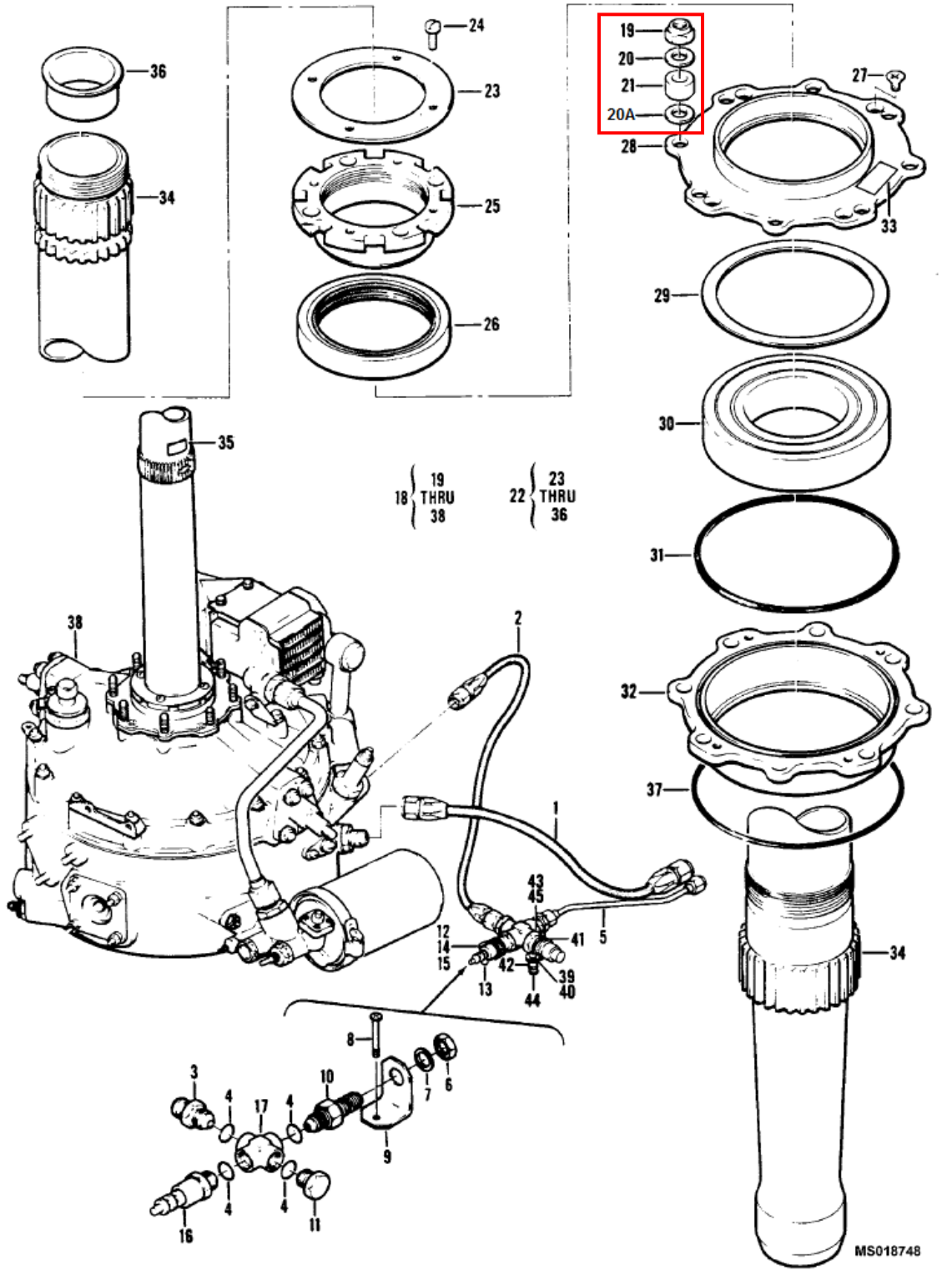


Figure 61. Transmission and Mast Installation

ADDENDUM TO H-58-14-AMAM-05
SWASHPLATE SUPPORT MOUNT HARDWARE

Swashplate Support Assembly Mount Hardware TM Changes

SECTION II

TM 1-1520-228-23P

(1) ILLUSTRATION		(2)	(3)	(4)	(5)	(6)	(7)
(a) FIG NO.	(b) ITEM NO.	SMR CODE	NATIONAL STOCK NUMBER	CAGEC	PART NUMBER	DESCRIPTION AND USABLE ON CODES (UOC)	QTY INC IN UNIT
						GROUP 06 DRIVE TRAIN FIGURE 61. TRANSMISSION AND MAST INSTALLATION	
61		XCFZZ		97499	206-040-003-1	.TRANSMISSION INSTL USBL EFF 68-16687 THRU 71-20865 SEE FIG. 2 FOR NHA UOC: 58A	1
61		XCFZZ		97499	206-040-003-15	.TRANSMISSION INSTL USBL EFF 72-21061 AND SUB SEE FIG. 2 FOR NHA UOC: 58A	1
61		XCDZZ		97499	206-961-433-1	.MOD, XMSN INSTL DETAIL OF KIT 206-704-117-1 SEE FIG. 2 FOR NHA	1
61		XCFZZ		97499	206-040-003-19	.TRANSMISSION INSTL SEE FIG. 2 FOR NHA UOC: 58C	1
61	1	MFOZZ		97499	70-010G000X116	.HOSE ASSY	1
61	2	MFOZZ		97499	70-010F000X116	.HOSE ASSY	1
61	3	PAOZZ		96906	MS24392D4	.NIPPLE, TUBE	1
61	4	PAOZZ		80205	NAS617-4	.O-RING	4
61	5	MFOZZ		97499	206-040-255-1	.TUBE ASSY	1
61	6	PAOZZ		98897	LS12906-184	.LOCKNUT, TUBE FITTING	1
61	7	PAOZZ		88044	AN960PD716	.WASHER, FLAT	1
61	8	PAOZZ		80205	MS27039-1-06	.SCREW, MACHINE	1
61	9	MFOZZ		97499	206-040-243-1	.CLIP	1
61	10	PAOZZ		97499	206-040-254-1	.ADAPTER, STRAIGHT, TU	1
61	11	PAOZZ		96906	MS24391D4L	.PLUG, MACHINE THREAD	1
61	12	PAOZZ		80205	MS27039-1-10	.SCREW, MACHINE	1
61	13	PAOZZ		80205	NAS43DD3-22N	.SPACER, SLEEVE	1
61	14	XDOZZ		88044	AN960PD10L	.WASHER, FLAT	1
61	15	PAOZZ		96906	MS21122W-12	.CLAMP, LOOP	1
61	16	PAOZZ		98087	1106P124	.SWITCH, PRESSURE	1
61	17	PAOZZ		88044	AN937D4	.CROSS, BOSS	1
61	18	AODDD		97499	206-040-003-3	.TRANSMISSION AND MAST ASSEMBLY UOC: 58A	1
61	18	AODDD		97499	206-040-003-21	.TRANSMISSION AND MAST ASSEMBLY UOC: 58C	1
61	19	PAOZZ		80205	MS21042L5	...NUT,SELF-LOCKING,EXTENDED WASHER	8
61	20	PAOZZ		80205	NAS1149F0563P	...WASHER, FLAT	8
61	20A	PAOZZ		80205	NAS1149F0563P	...WASHER, FLAT USED FOR SHIPPING ONLY	8
61	21	PAOZZ		80205	NAS43DD5-25N	...SPACER, SLEEVE USED FOR SHIPPING ONLY	8
61	22	AFOFF		97499	206-040-003-7	...MAST ASSY, TRANSMISS UOC: 58A	1
61	22	AFOFF		97499	206-040-003-25	...MAST ASSEMBLY UOC: 58C	1
61	23	PAFZZ		97499	206-040-113-3	...PLATE, LOCKING, NUT, T	1
61	24	PAOZZ		96906	MS35266-61	...SCREW, MACHINE	2
61	25	PAFZZ		97499	206-040-078-5	...NUT, PLAIN, ROUND	1
61	26	PAFZZ		76680	415364H19	...SEAL	1
61	27	PAOZZ		96906	MS24693S268	...SCREW, MACHINE	4
61	28	PAFZZ		97499	206-040-062-3	...PLATE, RETAINING, BEA	1
61	29	PAFZZ		97499	120-006C138E118	...SHIM	1
61	30	PAFZZ		97499	206-040-036-5	...BEARING, BALL, ANNULA	1
61	31	PAFZZ		96906	MS29561-246	...O-RING	1
61	32	PAFZZ		97499	206-040-061-1	...LINER, BEARING HOUSI	1