

OH-58...

Point of Measurement

Dear Windy,

When we're rigging the OH-58 collective pitch control, View A in Fig 11-1 of TM 55-1520-228-23 leaves much to be desired. There's a 0.062-in difference between 2 possible measurements.

Do you take the 1.98 ± 0.060 inches measurement from the pivot pin centerline to the spotface area under the support nut? Or do you take it from the pin to the raised area between the nuts?

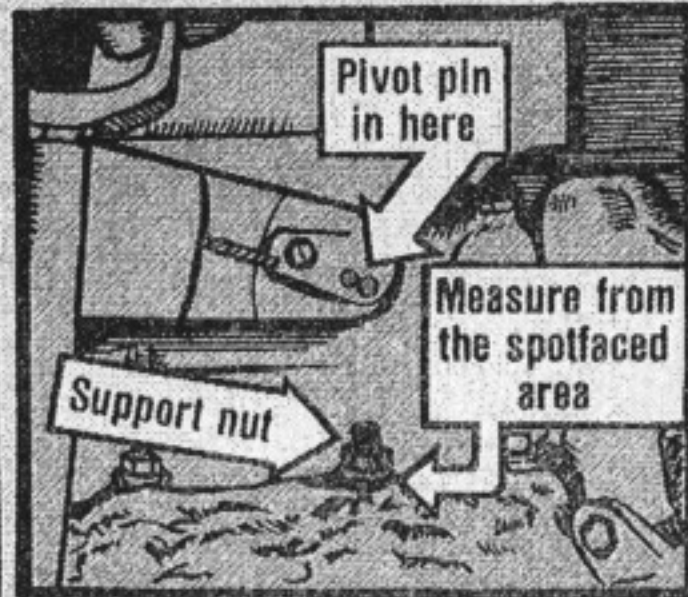
SGT J. J. B.

HERE'S WHERE TO MEASURE!

Dear Sergeant J. J. B.

Take your measurement from the pin to the spotfaced area under the nut.

The head hangar will clarify the



drawing in a change to the tech manual.